



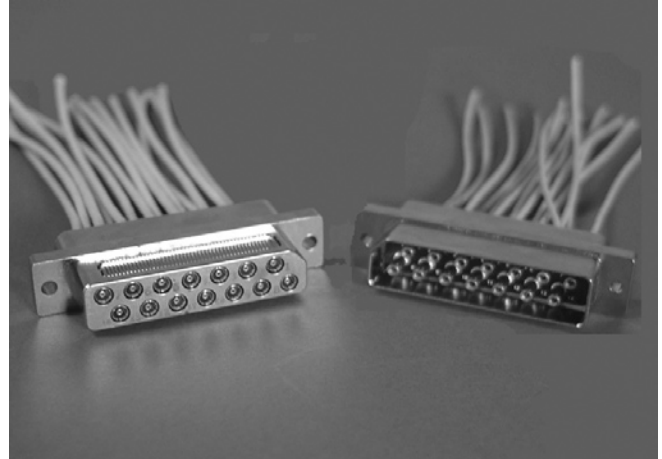
Size 10 D-Subminiature Connectors

Size 10 Triax Connectors and Contacts

Sabritec's rugged d-subminiature multiway connectors are designed to ground the outer shield of a triax contact directly to the shell of the connector. A multi-finger ground spring, fixed around the triax shell, provides a multi-point contact engagement for superior EMI shielding. The result is an extremely low contact resistance when measured from the triax contact outer body to the connector flange.

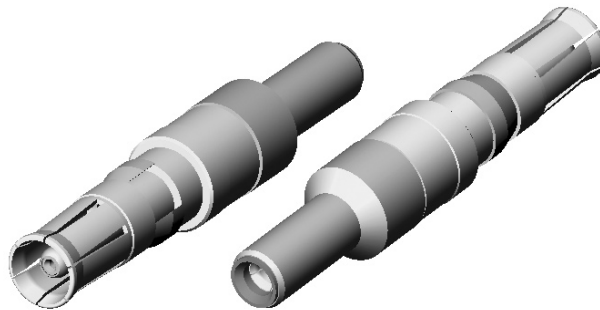
Up to the present day, the transmission of data in satellite applications has sufficed with the use of 50 ohm coax cable and connector interfaces. However, digital signal processors now used in commercial and military satellite installations require data to be transmitted for 100 Base-T and higher data rate formats. This makes the use of standard 50 ohm coax incompatible.

Sabritec's solution to this problem is a size 10 triax interface to transmit data at 100 ohms differential pair impedance packaged in a compact rugged connector. We took the design for the triax and manufactured a suitable package to be able to mate up to fourteen (14) of these contacts in a single connector interface. We added features such as a polarizing shell to prevent any mismatching and a scoop proof concentric triax interface that allows the repeatability and durability of mating the fourteen (14) Triax contacts.



Material & Finishes	
Shell & Center/Intermediate Contacts	Brass per ASTM-B16, alloy UNS C36000 or BeCu per ASTM-B196, alloy UNS C17200, C17300 or Leaded Nickel Copper, alloy UNS C19500, C19600 Gold Plate per MIL-DTL-45204, Type II, Class 1
Ground Spring	BeCu per ASTM-B194, alloy UNS C17200 Gold Plate per MIL-DTL-45204, Type II, Class 1 or Nickel Plate per SAE AMS-QQ-N-290
Snap Ring	BeCu per ASTM-B196, alloy UNS C17200, C17300 Nickel Plate per SAE AMS-QQ-N-290
Insulators	PTFE per ASTM-D1710 or ULTERM 1000
Connector Plug/Receptacle Shell	Aluminum per ASTM-B211/221, 6061-T6 Electroless Nickel plate per SAE AMS-C-26074
Data Rate	Up to 500 Mbits/second

All specifications subject to change without notice.



Size 10 Triaxial Pin to Socket Adapter and Triaxial Socket Contact

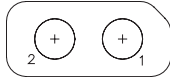


Multi-Way Triax Insert Arrangements

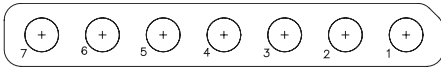
Adapters/Plugs/Receptacles

Insert Arrangements

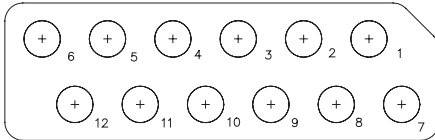
Shell Size 1
Arrangement 1-2
2 # 10 Triax/Twinax Contacts



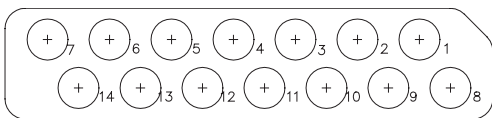
Shell Size 2
Arrangement 2-7
7 # 10 Triax/Twinax Contacts



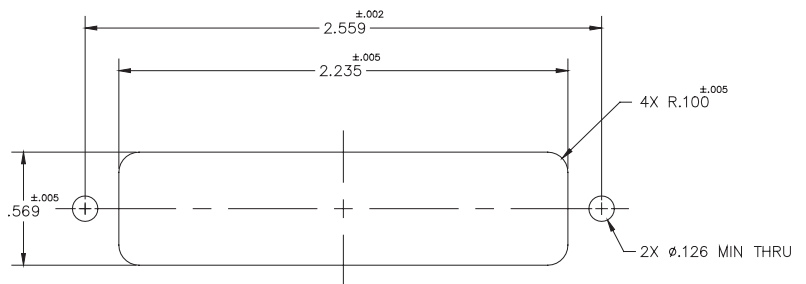
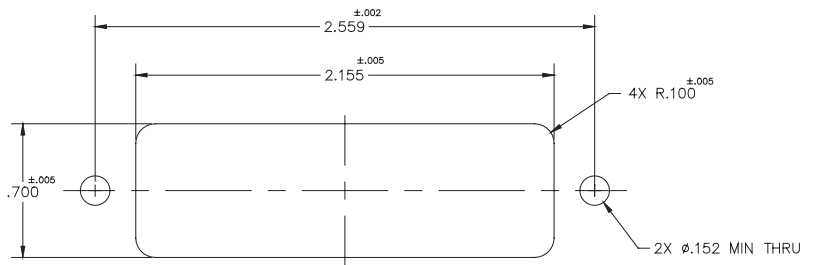
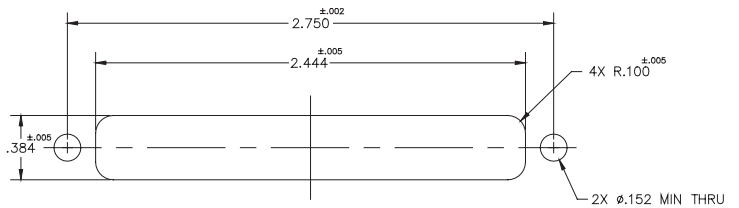
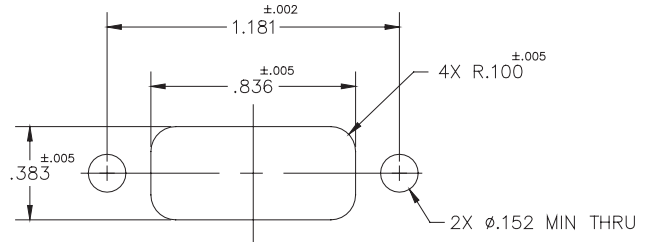
Shell Size 3
Arrangement 3-12
12 # 10 Triax/Twinax Contacts



Shell Size 4
Arrangement 4-14
14 #10 Triax/Twinax Contacts



Panel Cut-Out For Multiway Connector Assemblies

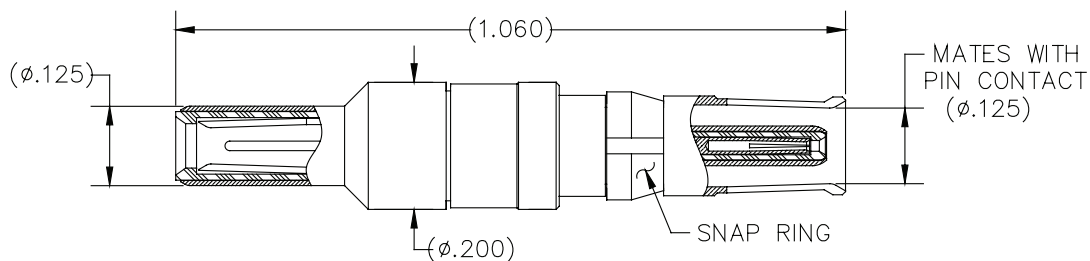




Multiway Triax/Twinax Contacts

Size 10 Triax/Twinax Contacts

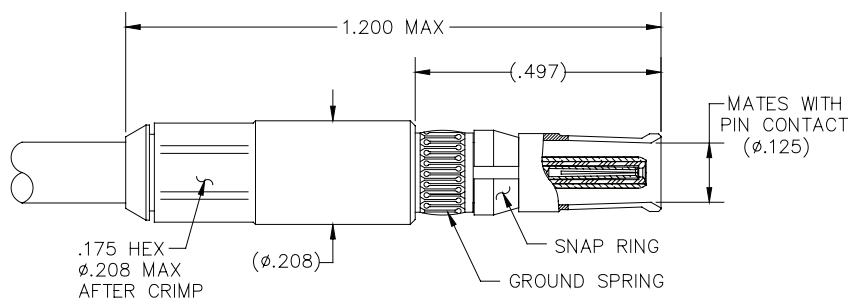
Size 10 Triaxial Pin to Socket Contact



P/N: 018800-4003

Contact Fits Sabritec Rugged D-Subminiature Adapter P/N: 012900-4005 Thru 012900-4008

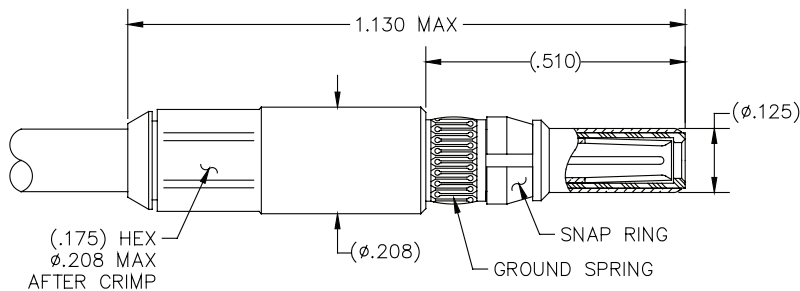
Size 10 Triaxial Socket Contact



Part Number	Cable Type	Cable
018912-2033	Flexible Twinax	540-1172-000

Contact Fits Sabritec Rugged D-Subminiature Plug P/N: 012900-2027 Thru 012900-2030

Size 10 Triaxial Pin Contact



Part Number	Cable Type	Cable
018812-2034	Flexible Twinax	540-1172-000

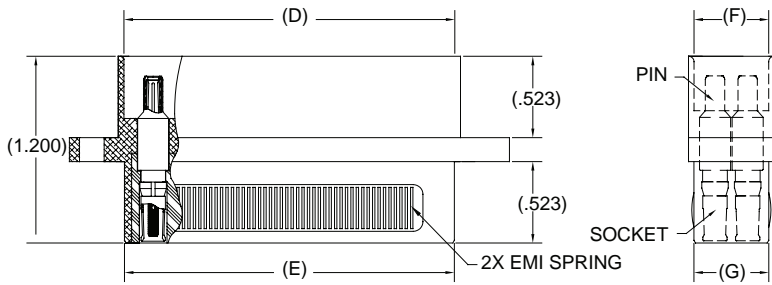
Contact Fits Sabritec Rugged D-Subminiature Receptacle P/N: 012900-3002 Thru 012900-3005



Multiway Triax/Twinax Connectors (MTC)

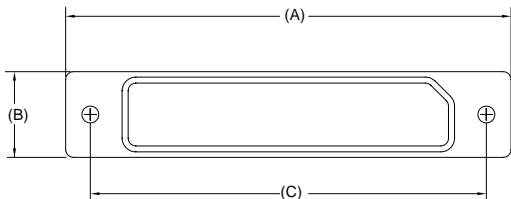
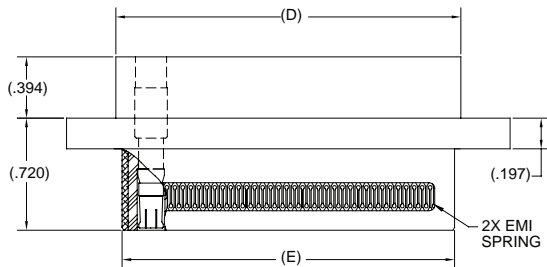
Adapters/Plugs/Receptacles

Rugged Multi-Way Triax/Twinax Adapter



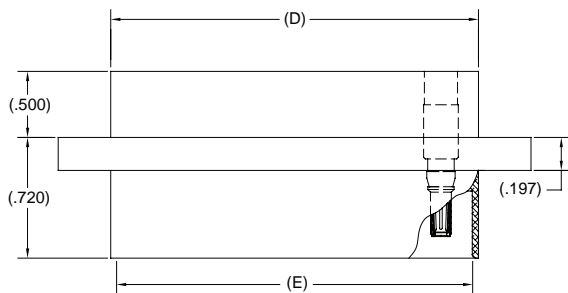
Part Number	Contacts	A	B	C	D	E	F	G
012900-4008	2	1.575	0.383	1.181	0.738	0.728	0.341	0.331
012900-4007	7	3.050	0.384	2.750	2.325	2.315	0.341	0.331
012900-4006	12	2.834	0.741	2.559	2.165	2.125	0.681	0.671
012900-4005	14	2.834	0.551	2.559	2.135	2.125	0.491	0.481

Rugged Multi-Way Triax/Twinax Plug



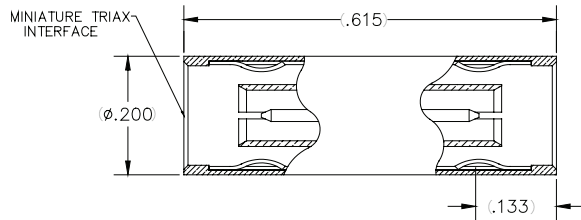
Part Number	Contacts	A	B	C	D	E	F	G
012900-2030	2	1.575	0.472	1.181	0.807	0.728	0.354	0.331
012900-2029	7	3.050	0.400	2.750	2.415	2.315	0.355	0.331
012900-2028	12	2.834	0.741	2.559	2.125	2.125	0.671	0.671
012900-2027	14	2.834	0.551	2.559	2.205	2.125	0.540	0.481

Rugged Multi-Way Triax/Twinax Receptacle



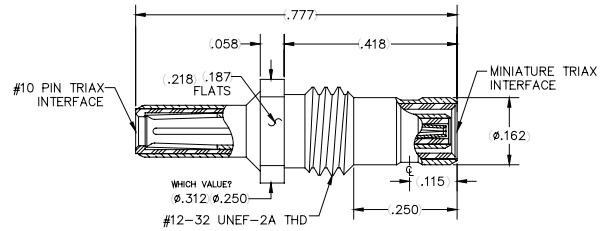
Part Number	Contacts	A	B	C	D	E	F	G
012900-3005	2	1.575	0.472	1.181	0.807	0.738	0.354	0.341
012900-3004	7	3.050	0.400	2.750	2.415	2.325	0.355	0.341
012900-3003	12	2.834	0.741	2.559	2.125	2.135	0.671	0.681
012900-3002	14	2.834	0.551	2.559	2.205	2.135	0.540	0.491

Miniature Triax Blind Mate Plug



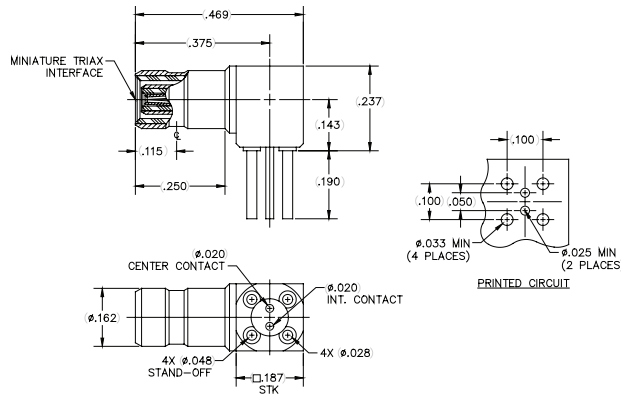
P/N: 014500-4001

Miniature Triax Receptacle to #10 Triax Pin



P/N: 014500-4002

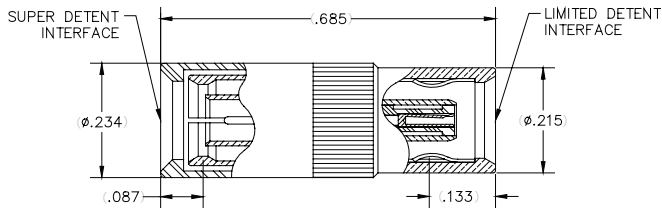
Miniature Triaxial Right Angle Receptacle PCB Mount



P/N: 014517-1001

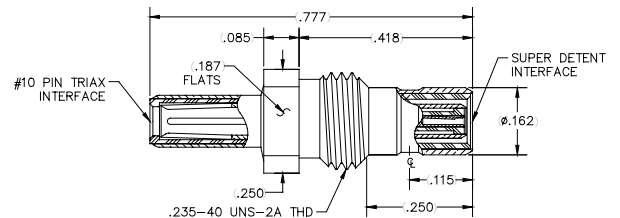
PCB Mount Triax Connectors

Triax Blindmate Plug Full to Limited Detent



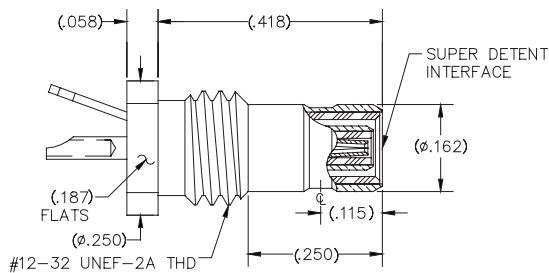
P/N: 014500-4003

Triax Receptacle Full Detent to #10 Pin



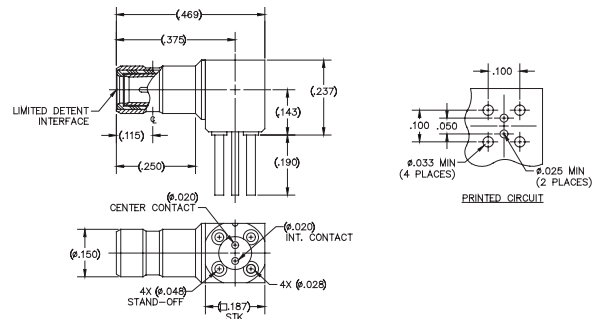
P/N: 014500-4004

Triax Bulkhead Mount Solder Tab Detent



P/N: 014500-5002

Limited Detent R/A Receptacle PCB Mount



P/N: 014517-1002