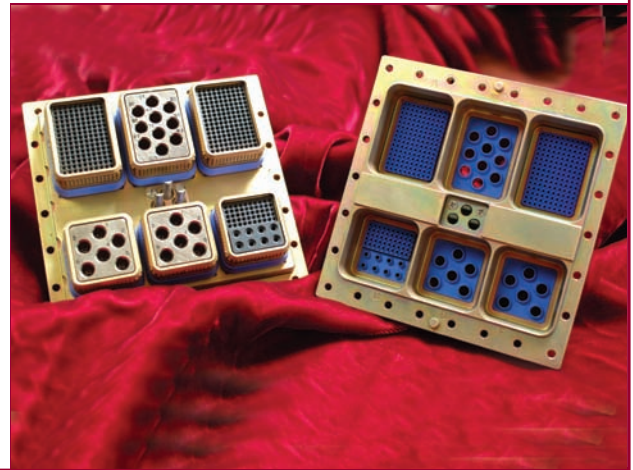


# MIL-DTL-83527 Connector Series



## MIL-DTL-83527 Rack and Panel Connectors

Sabritec's MIL-DTL-83527 Rack and Panel connectors meet or exceed the applicable requirements of the military specification and come in a wide variety of insert arrangements and shell sizes. Contact patterns include mixed Signal, Power, Coax, Triax, Fiber Optic (ARINC 801 and Expanded Beam Contacts) Twinax and Quadrax contacts for standard or custom insert arrangements.

Sabritec's Twinax and Quadrax contacts offer balanced and matched impedance performance for a wide variety of transmission systems and cable characteristics. Our contacts are designed to ensure optimum transmission integrity even at the highest data rates.

Contacts are offered with crimp or solder termination with anti-rotational keyed insert assemblies for High-Speed Fibre Channel or Ethernet type applications.

Sabritec's MIL-DTL-83527 rack and panel connectors can incorporate EMI filtering and transient EMP protection to help maintain signal integrity.

These connectors are designed for extreme environmental concerns including shock, vibration and humidity.

### Material

Shell: aluminum alloy  
Insulators: high grade plastic  
Contacts: copper alloy, gold plate  
Hardware: stainless steel

### Features:

- Isolated cavities available for tempest applications
- EMI/RFI environmentally sealed backshells
- Single or Multiport exit termination points with standard MIL-DTL-38999 backshells.

### Backshells

Sabritec's rugged EMI/RFI environmental backshells for MIL-DTL-83527 and ARINC 600 connectors offer many innovative features including accessory threads, optional cable entry locations as well as single or multi-cavity ports.

### Features:

- EMI/RFI Environmentally sealed backshells
- Moisture, splash and dust proof
- Resilient gasket sealing from the rear of the connector shell to the backshell junction

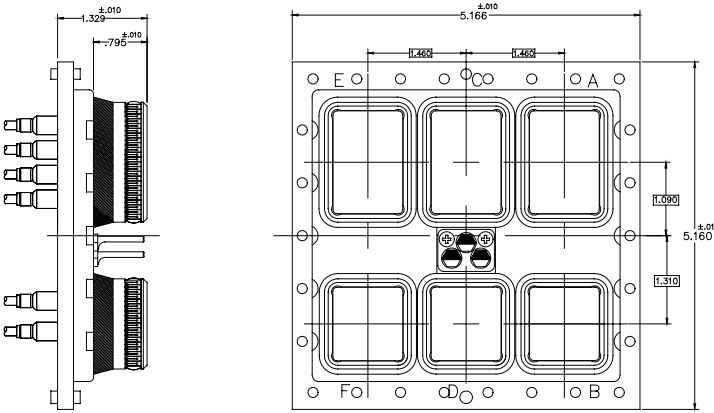


# MIL-DTL-83527

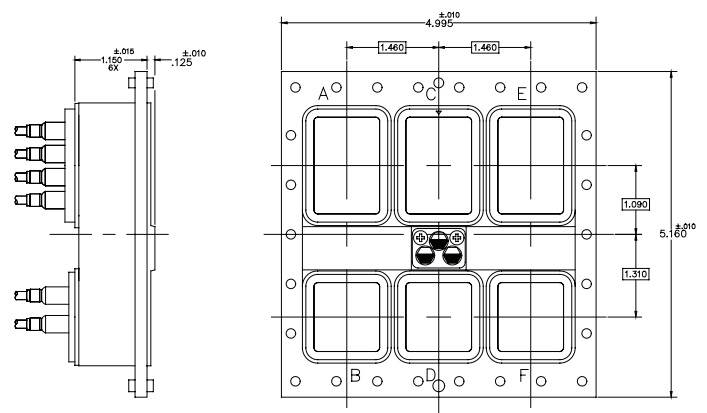
## Shell Size 4A Plug and Receptacle



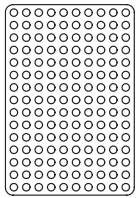
### MIL-DTL-83527 Shell Size 4A Plug



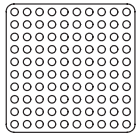
### MIL-DTL-83527 Shell Size 4A Receptacle



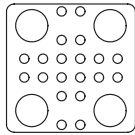
### MIL-DTL-83527 Insert Arrangements



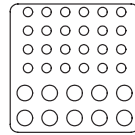
Insert 1  
150 Size #22 Contacts



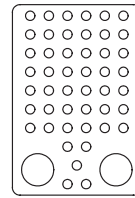
Insert 2  
100 Size #22 Contacts



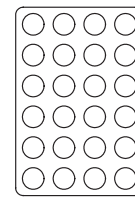
Insert 3  
20 Size #20 Contacts  
4 Size #8 T/C



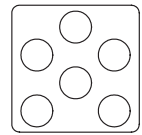
Insert 4  
24 Size #20 Contacts  
10 Size #16 Contacts



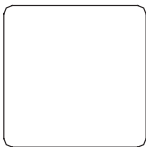
Insert 5  
47 Size #20 Contacts  
2 Size #8 T/C



Insert 6  
24 Size #12 Contacts



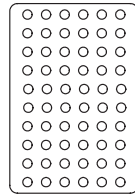
Insert 7  
6 Size #8 T/C



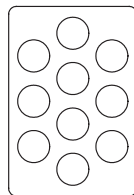
Insert 8  
Blank



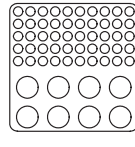
Insert 9  
Blank



Insert 10  
60 Size #20 Contacts



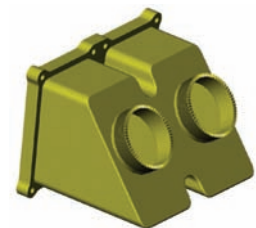
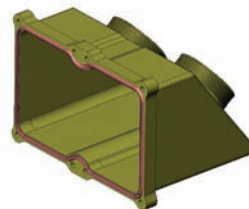
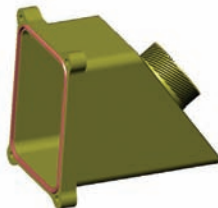
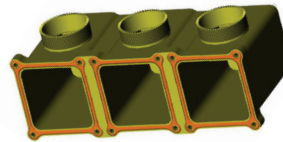
Insert 11  
10 Size #8 T/C



Insert 12  
50 Size #22 Contacts  
8 Size #12 Contacts

Specify  
T = Twinaxial/Quadax Cavity (Anti-Rotational)  
C = Coaxial/Triaxial Cavity  
T/C Cavities Available for Inserts 3, 5, 7, 11

### Sample Backshells



#### Sabritec - North America

##### Headquarters

17550 Gillette Ave, Irvine  
CA 92614, USA  
t: +1 (949) 250-1244  
f: +1 (949) 250-1009  
e: customerservice@sabritec.com

#### Sabritec Europe

36-38 Waterloo Road,  
London NW2 7UH, UK  
t: +44 (0) 20 8450 8033  
f: +44 (0) 20 8452 5142  
e: europeansales@sabritec.com

FOR FURTHER INFORMATION VISIT >> [www.sabritec.com](http://www.sabritec.com)